

# BIBLIOGRAPHY

- Alabama State Legislature.** (1975). AL Code § 11-52-9. In The Code of Alabama. <http://alisondb.legislature.state.al.us/alison/CodeOfAlabama/1975/Coatoc.htm>
- Alexander, F. S., & Moore, B.** (2005, April). Land Bank Authorities: A Guide for the Creation and Operation of Local Land Banks. HUD Exchange. Retrieved December 7, 2021, from <https://files.hudexchange.info/resources/documents/LandBankAuthoritiesGuideforCreationandOperation.pdf>
- American Planning Association (Ed.).** (2014). Investing in Place. [https://planning-org-uploaded-media.s3.amazonaws.com/legacy\\_resources/policy/polls/investing/pdf/pollinvestingreport.pdf](https://planning-org-uploaded-media.s3.amazonaws.com/legacy_resources/policy/polls/investing/pdf/pollinvestingreport.pdf)
- Anderson, B.** (2012). Big Business for Private Placement | Housing Finance Magazine. Affordable Housing Finance. Retrieved January 10, 2022, from [https://www.housingfinance.com/finance/big-business-for-private-placement\\_o](https://www.housingfinance.com/finance/big-business-for-private-placement_o)
- Anderson, R. J.** (2015, April 27). How Do I Get Started as a Developer? --With a Four-Plex. RJOHNTEBAD. Retrieved January 7, 2022, from <https://www.rjohnthebad.com/plain-talk/2015/04/27/how-do-i-get-started-as-a-developer-with-a-four-plex?format=amp>
- Atlanta ToolBank.** (2021). Atlanta ToolBank. Atlanta ToolBank. Retrieved Dec. 2, 2021, from <https://www.atlantatoolbank.org/>
- Auburn University Urban Studio (Ed.).** (2004). Fairfield, Alabama Community Plan. Auburn University Digital Library. <https://content.lib.auburn.edu/digital/search/collection/urban!urban/searchterm/Fairfield/field/all/mode/all/conn/and/cosuppress/1>
- BHAM WIKI.** (2021, October 29). Fairfield. Fairfield. <https://www.bhamwiki.com/w/Fairfield>
- Bolles, D.** (2021, March 16). AlabamaWorks! Resources. AlabamaWorks! Retrieved January 5, 2022, from <https://alabamaworks.com/resources/>
- Bonior, J.** (2020, October 28). There's Reason to Celebrate in Fairfield, Alabama. Alliance for American Manufacturing. Retrieved October 27, 2021, from <https://www.americanmanufacturing.org/blog/theres-reason-to-celebrate-in-fairfield-alabama/>
- Center for Neighborhood Technology.** (2021). H+T Map | H+T Index. The H+T Affordability Index. Retrieved December 7, 2021, from <https://htaindex.cnt.org/map/>
- City Data.** (2021, January 1). Crime Rate in Fairfield, Alabama. City-Data.com. Retrieved October 29, 2021, from <https://www.city-data.com/crime/crime-Fairfield-Alabama.html>
- City of Baltimore, MD.** (2014, May 14). Growing Green Initiative. Baltimore Department of Planning. <https://planning.baltimorecity.gov/programs-initiatives/growing-green-initiative>
- Daisa, J.M., & Peers, J.B.** (1997). NARROW RESIDENTIAL STREETS: DO THEY REALLY SLOW DOWN SPEEDS? [https://nacto.org/wp-content/uploads/2015/04/narrow\\_residential\\_streets\\_daisa.pdf](https://nacto.org/wp-content/uploads/2015/04/narrow_residential_streets_daisa.pdf)

- Educational – AIBlackCC.org.** (2019). Alabama State Black Chamber of Commerce. Retrieved January 5, 2022, from [https://alblackcc.org/?page\\_id=620](https://alblackcc.org/?page_id=620)
- Eisenman, T.S.; Coleman, A.F.; LaBombard, G.** Street Trees for Bicyclists, Pedestrians, and Vehicle Drivers: A Systematic Multimodal Review. *Urban Sci.* 2021, 5, 56. <https://doi.org/10.3390/urbansci5030056>
- Esri Demographics.** (2021, January 1). Selected demographic and housing characteristics, 2021/2026. ESRI. Retrieved September 1-30, 2021, from <https://doc.arcgis.com/en/esri-demographics/data/updated-demographics.htm>
- Fairfield Alabama Housing Authority.** (2021, October 28). Locations. Locations. <https://www.fairfieldha.org/locations/map>
- Freshwater Land Trust.** (2010). The Red Rock Ridge and Valley Trail System [Master Plan]. Red Rock Trail System. <https://freshwaterlandtrust.org/core/uploads/2018/01/Old-Website-Full-Red-Rock-Plan.pdf>
- Freshwater Land Trust.** (2019, August 2). Now Open: High Ore Line Trail to Red Mountain Park. Freshwater Land Trust. Retrieved October 29, 2021, from <https://freshwaterlandtrust.org/2019/08/high-ore-open/>
- Gibbs, R. J.** (2012). *Principles of Urban Retail Planning and Development.* Wiley.
- Hartmans, A.** (2021, April 6). Retail Apocalypse Will Result in Another 80,000 Stores Closing by 2026. *Business Insider.* Retrieved November 23, 2021, from <https://www.businessinsider.com/retail-apocalypse-means-80000-store-closures-next-5-years-2021-4>
- Heller, N., & Reilly, B.** (2021, May 18). Counting the impact of incremental development | CNU. *Public Square, A CNU Journal.* Retrieved January 6, 2022, from <https://www.cnu.org/publicsquare/2021/05/18/counting-impact-incremental-development>
- IncDev Alliance.** (2022). National Virtual Small Developer Boot Camp. Retrieved January 6, 2022, from <https://www.incrementaldevelopment.org/events>
- Incremental Development Alliance.** (2016, Nov). Missing Middle Housing Types for Chattanooga. Missing Middle Housing Types for Chattanooga. Retrieved Jan, 2022, from [https://static1.squarespace.com/static/5727ddb59827e6e7a112575/t/5b75b5af562fa7c107b33f1e/1534440910400/Missing+Middle+housing+Types+for+Chattanooga\\_Digital.pdf](https://static1.squarespace.com/static/5727ddb59827e6e7a112575/t/5b75b5af562fa7c107b33f1e/1534440910400/Missing+Middle+housing+Types+for+Chattanooga_Digital.pdf)
- Incremental Development Alliance.** (2022). Our Work — IncDev Alliance. IncDev Alliance. Retrieved January 6, 2022, from <https://www.incrementaldevelopment.org/work>

- Lewis, H. J.** (2008, January 8). Birmingham. Encyclopedia of Alabama. Retrieved October 27, 2021, from <http://encyclopediaofalabama.org/Article/h-1421>
- Low Mill A&E.** (n.d.). [Huntsville.org](https://www.huntsville.org/things-to-do/arts-culture/lowe-mill/). Retrieved December 7, 2021, from <https://www.huntsville.org/things-to-do/arts-culture/lowe-mill/>
- Low Mill ARTS & Entertainment | History.** (n.d.). Low Mill ARTS & Entertainment |. Retrieved December 7, 2021, from <https://lowemill.art/history/> v
- Low Mill District – Downtown Huntsville.** (n.d.). Downtown Huntsville. Retrieved December 7, 2021, from <https://www.downtownhuntsville.org/lowemilldistrict>
- Marohn, C., & Herriges, D.** (2021, May 21). Accelerate Success in Your Place with Economic Gardening. Strong Towns. Retrieved January 5, 2022, from <https://www.strongtowns.org/journal/2021/5/21/rbc2021-accelerate-success-in-your-place-with-economic-gardening>
- Meade & Huey, Engineers.** (1911). Official map of the Corey Land Company (revised). Birmingham Public Library. <https://cdm16044.contentdm.oclc.org/digital/collection/p15099coll3/id/1371/rec/5>
- Miles College CDC.** (2021). Miles College Community Development Corporation – Building Regenerative Communities within the City of Fairfield. Retrieved January 5, 2022, from <http://milescdc.org/>
- Miles College Community Development Corporation.** (2020). Strategic Plan 2020-2025.
- Montgomery Housing Authority.** (2022). The Plaza at Centennial Hill. Montgomery Housing Authority. Retrieved January 10, 2022, from <https://mhatoday.org/property/the-plaza-at-centennial-hill/>
- Morris, P. A., & White, M. L.** (Eds.). (1989). Designs on Birmingham: A Landscape History of a Southern City and Its Suburbs. Birmingham Historical Society. <https://digital.archives.alabama.gov/digital/collection/hgpub/id/49800>
- Moss, S., & Paul, R.** (2019, May 11). Chasing the Moon. PBS. Retrieved October 27, 2021, from <https://www.pbs.org/wgbh/americanexperience/features/chasing-moon-von-braun-record-on-civil-rights/>
- The New York Times.** (2021, October 8). To Combat Gun Violence, Clean Up the Neighborhood. The New York Times. <https://www.nytimes.com/2021/10/08/opinion/gun-violence-biden-philadelphia.html?smid=em-share>
- Regional Planning Commission of Greater Birmingham.** (2019, October). Regional Trends: Trends of the Greater Birmingham Region. RPCGB Data and Maps Downloads. <https://www.rpcgb.org/data-and-maps-downloads>

- UrbanFootprint.** (2021). Maps throughout this book were created using UrbanFootprint software and are used herein under license, along with data from the Regional Planning Commission of Greater Birmingham. Copyright © UrbanFootprint, © Mapbox, © OpenStreetMap. All rights reserved. UrbanFootprint. <https://urbanfootprint.com>
- U.S. Census Bureau.** (2020). Selected demographic and housing characteristics, 2015-2019 American Community Survey 5-year estimates. On the Map. <https://onthemap.ces.census.gov/>
- U.S. Census Bureau.** (2020, April 1). 2020 Census of Population and Housing. Decennial Census by Decades. <https://www.census.gov/quickfacts/fact/table/fairfieldcityalabama/POP010220#POP010220>
- U.S. Department of Housing and Urban Development.** (2021, October 28). Choice Neighborhoods. Choice Neighborhoods. [https://www.hud.gov/program\\_offices/public\\_indian\\_housing/programs/ph/cn](https://www.hud.gov/program_offices/public_indian_housing/programs/ph/cn)
- U.S. Department of Housing and Urban Development.** (2021, October 28). Choice Neighborhoods Planning Grants. Choice Neighborhoods Planning Grants. [https://www.hud.gov/program\\_offices/public\\_indian\\_housing/programs/ph/cn/planninggrants](https://www.hud.gov/program_offices/public_indian_housing/programs/ph/cn/planninggrants)
- U.S. Department of Housing and Urban Development.** (2021, October 28). Repositioning Public Housing. Repositioning Public Housing. [https://www.hud.gov/program\\_offices/public\\_indian\\_housing/repositioning](https://www.hud.gov/program_offices/public_indian_housing/repositioning)
- US Retail Marketplace Data 2014 Methodology Statement.** (2014). Esri. Retrieved January 5, 2022, from <http://www.esri.com/library/whitepapers/pdfs/esri-data-retail-marketplace.pdf>
- White, M. L.** (1981). The Birmingham District: An Industrial History and Guide. Birmingham Historical Society. <https://digital.archives.alabama.gov/digital/collection/hgpub/id/49998>
- Yoo, J. A.** (2010, January 5). Miles College (1905- ). Black Past. Retrieved October 27, 2021, from <https://www.blackpast.org/african-american-history/miles-college-1905/>
- Zaner, L.** (2013, November 1). Montgomery Housing Authority, The Michaels Organization Hosting Open House at The Plaza At Centennial Hill, Wednesday, Nov. 6. Retrieved January 10, 2022, from <https://www.prweb.com/releases/2013/11/prweb11290640.htm>

# IMAGES

Image 1.1	Fairfield context map. . . . .	1
Image 2.1	Abandoned house on Lloyd Nolan Parkway . . . . .	7
Image 2.2	Forest Hills residences . . . . .	8
Image 2.4	53rd St. residences . . . . .	8
Image 2.3	Glen Oaks residences . . . . .	8
Image 2.5	Myron Massey Blvd. residences . . . . .	8
Image 2.6	Lloyd Noland Parkway residences. . . . .	9
Image 2.7	Lloyd Noland apartment building . . . . .	9
Image 2.8	Vacant home, Highland Park, Michigan . . . . .	13
Image 2.9	Community garden raised beds. . . . .	14
Image 2.10	Community garden . . . . .	15
Image 2.11	The Gangsta Gardener, Ron Finley (US Dept of State) . . . . .	15
Image 2.12	Step 1: Demolition and abatement. . . . .	19
Image 2.13	Step 2: Activate with community gardens. . . . .	19
Image 2.15	Step 4: Market rate infill over time. . . . .	20
Image 2.14	Step 3: Small-scale accessory buildings . . . . .	20
Image 2.16	Miles Village on the Hill diagram. . . . .	21
Image 2.17	Demetrius Newton Gardens . . . . .	22
Image 2.18	Mattie Gill Jackson Redevelopment Concept (Auburn University Urban Studio, 2004) . . . . .	24
Image 2.19	Plaza at Centennial Hill phasing plan (Cison) . . . . .	25
Image 3.1	Gary Avenue Facade Improvements (Auburn University Urban Studio, 2004) . . . . .	30
Image 3.2	Pop-up nursery. . . . .	32
Image 3.3	Food truck. . . . .	32
Image 3.4	Made BHAM Pop-up (Rev Birmingham). . . . .	33
Image 3.5	Craft fair . . . . .	33
Image 3.6	2nd & Grand, Los Angeles (G. Lennon). . . . .	34
Image 3.7	Jersey City parklet (Street Plans). . . . .	34
Image 3.8	Food truck event . . . . .	35
Image 3.9	Norfolk resilient greening (Street Plans). . . . .	35
Image 3.10	4604 Gary Ave. . . . .	36
Image 3.11	4410-20 Gary Ave. . . . .	36
Image 3.12	3601 Avenue East. . . . .	37
Image 3.13	3641 Commerce Ave/Veterns Memorial Dr . . . . .	37
Image 3.14	Lowe Mill concert (Lowe Mill) . . . . .	39
Image 3.15	Downtown gateway illustration . . . . .	42
Image 3.16	Pop-up market illustration . . . . .	42
Image 3.17	Southern gateway and market diagram. . . . .	43
Image 3.18	Food truck pod. . . . .	45
Image 3.19	Food truck dining. . . . .	45
Image 3.20	Incremental Development Alliance training (IncDev) . . . . .	47
Image 3.21	Incremental development building types . . . . .	49
Image 4.1	43rd Streetscape, Library of Congress (J. Lowe) . . . . .	52
Image 4.2	Typical neighborhood park possibility . . . . .	54
Image 4.3	Memorial Park . . . . .	54
Image 4.4	Gary Avenue . . . . .	57
Image 4.5	Downtown Fairfield. . . . .	57
Image 4.6	Lloyd Noland Drive residences . . . . .	58
Image 4.7	Hillside Drive residences . . . . .	58
Image 4.8	Miles College Brown Hall . . . . .	61
Image 4.9	Miles College Pedestrian Gate. . . . .	61
Image 4.10	Belwood homes. . . . .	62
Image 4.11	Glen Oaks apartments . . . . .	62

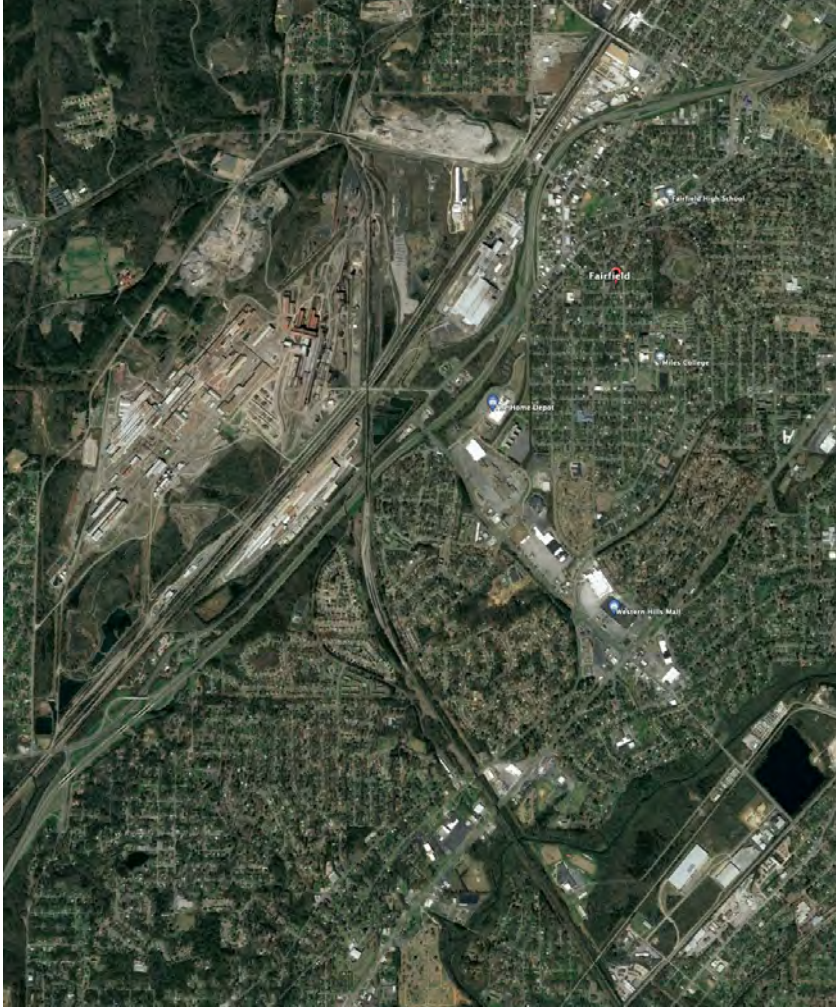
Image 4.12	Lloyd Nolan Parkway general business	65
Image 4.13	Milstead Road general business	65
Image 4.14	Western Hills Mall	66
Image 4.15	Walmart building	66
Image 4.16	Veterans Memorial Drive	69
Image 4.17	Ensley Pleasant Grove Road	69
Image 4.18	Workshop participation	70
Image 5.1	Lloyd Noland Parkway	72
Image 5.2	52nd St. pavement condition	79
Image 5.3	Access – before consolidation (RPCGB)	81
Image 5.4	Access – after consolidation (RPCGB)	81
Image 5.5	Raised Median Island (Dan Burden)	82
Image 5.6	Speed Table (WBAY)	82
Image 5.7	Traffic Circle (Twitter)	82
Image 5.8	59th Street (Google)	83
Image 5.9	Simple green street retrofit	86
Image 5.10	Rain garden (aces.edu)	87
Image 5.11	Bioretention diagram (epa.gov)	87
Image 5.12	Green parking (epa.gov)	88
Image 5.13	Green planters (epa.gov)	88
Image 5.14	Dry swale (epa.gov)	89
Image 5.15	Permeable paving (epa.gov)	89
Image 6.1	Magic City Blight Busters in Fountain Heights	90
Image 6.2	Vacant House, 54th St.	92
Image 6.3	Community volunteer trash clean-up efforts	100
Image 7.1	Provo, Utah, Downtown	109
Image 7.2	Excelsior, MN sidewalk sale	110
Image 7.3	New Orleans storefront	110
Image 7.4	Cedar Falls, IA storefronts	110
Image 7.5	U.S. Steel Fairfield Works	112
Image 9.1	Fairfield Population Change	121
Image 9.2	Percent Change in Population 2000 – 2020	122
Image 9.3	Age Comparison	123
Image 9.4	Racial Comparison	124
Image 9.5	Income Range	126
Image 9.7	Cottage, photographer: Eric Allix Rogers	129
Image 9.6	Housing Vacancy Comparison	129
Image 9.8	Housing Value Comparison	130
Image 9.9	Housing Type Comparison	132
Image 9.10	Duplex, 4908 Carnegie	132
Image 9.12	Employment by Industry	133
Image 9.11	Unemployment Comparison	133
Image 9.13	Commute Transportation	134
Image 9.15	Job Counts by Distance & Direction, 2018	135
Image 9.14	Inflow Outflow Job Counts	135
Image 9.16	Downtown Sidewalks	136
Image 9.17	Walk Time to Parks	138
Image 9.18	Project website	148
Image 9.19	Kick-off meeting at City Hall	150
Image 9.20	Engagement summary photos	151

FAIRFIELD HIGH PREPARATORY SCHOOL









[WWW.FAIRFIELDMASTERPLAN.COM](http://WWW.FAIRFIELDMASTERPLAN.COM)